

[illegible]

COMITENTE	DATA
CITTA' CASTEL MAGGIORE	I-12-2017
SETTORE LAVORI PUBBLICI	SCALA
RUP: LUCIA CAMPANA	I:50
PROPRIETA	FILE
	D17146001A

UBICAZIONE	COMUNE: BOLOGNA LOCALITÀ: CASTEL MAGGIORE INDIRIZZO: VIA LIRONE	Rif. URBANISTICI	FOGLIO: MAPPALE: PARTICELLA:
------------	---	------------------	------------------------------------

Oggetto
REALIZZAZIONE DI SKATE PARK
PRESSO AREA SPORTIVA

PROGETTISTA LOTTI ARCH. ALESSIO

ELABORATI PLANIMETRIA PARTICOLARI

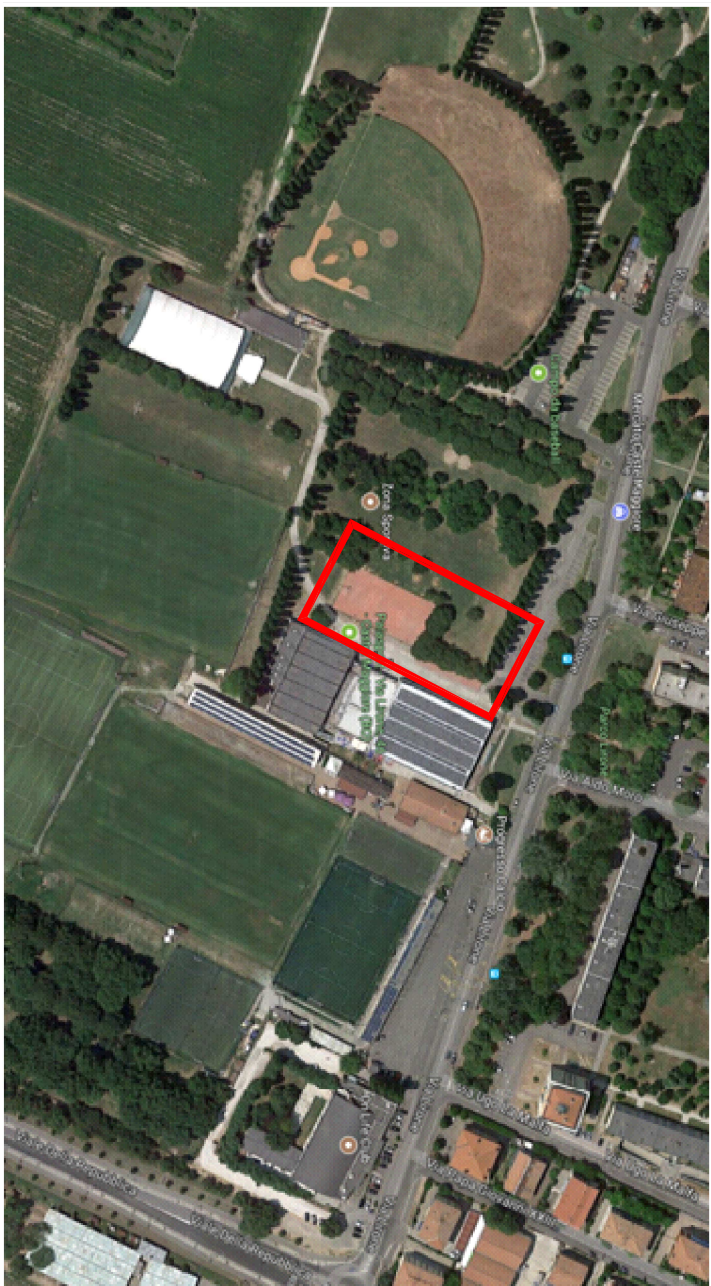
TAVOLA

5

ELABORATO

PROGETTO DEFINITIVO-ESECUTIVO
PARTICOLARI ESECUTIVI

IL PROGETTO ESECUTIVO È IN POSSESSO DELL'AMMINISTRAZIONE DI LECCE CON DIRITTO DI REPERIRSI
INFORMAZIONE A TRONCHIATA SOTTO AUTORIZZAZIONE SCITTA.



DETTAGLIO CASSERI CURVE

Technical drawing of a curved compensator. The drawing shows a curved profile with dimensions in millimeters. The outer radius is R1.80, and the inner radius is R1.60. The thickness of the compensator is 0.10 mm. The total width of the compensator is 1.73 mm. The distance from the center of the curve to the outer edge is 1.31 mm. The angle of the curve is 2.4°. The drawing is labeled with 'C.C. 01' and 'X 11'.

CASSERO CURVE 3
compensato spess. 20 mm
R int. 160 cm
sviluppo int. 173 cm
pezzi occorrenti n. 4

(C.C. 02) X 4

CASSERO CURVE 8
compensato spess. 20 mm
R int. 200 cm
sviluppo int. 133+248 cm
pezzi occorrenti n. 4

(C.C. 07) X 4

CASSERO CURVE 12
compensato spess. 20 mm
R int. 190 cm
sviluppo int. 210 cm
pezzi occorrenti n. 2

(C.C. 11) X 2

CASSERO CURVE 4
 compensato spess. 20 mm
 R int. 185 cm
 sviluppo int. 185 cm
 pezzi occorrenti n. 2

CASSERO CURVE 9
 compensato spess. 20 mm
 R int. 200 cm
 sviluppo int. 260 cm
 pezzi occorrenti n. 2

CASSERO CURVE 13
 compensato spess. 20 mm
 R int. 150 cm
 sviluppo int. 105-85 cm
 pezzi occorrenti n. 3

C.C. 04 X 2

CASSERO CURVE 5
compensato spess. 20 mm
R int. 160 cm
sviluppo int. 176 cm
pezzi occorrenti n. 2

C.C. 09 X 2

CASSERO CURVE 10
compensato spess. 20 mm
R int. 200 cm
sviluppo int. 198 cm
pezzi occorrenti n. 2

C.C. 13 X 7

CASSERO CURVE 14
compensato spess. 20 mm
R int. 150 cm
sviluppo int. 105-95 cm
pezzi occorrenti n. 7

The figure contains three technical drawings of compensating curved elbows, each with its own set of dimensions and part counts. The first drawing (C.C. 04) shows an elbow with a 160 cm internal radius and 176 cm internal development, requiring 2 parts. The second drawing (C.C. 09) shows an elbow with a 200 cm internal radius and 198 cm internal development, also requiring 2 parts. The third drawing (C.C. 13) shows an elbow with a 150 cm internal radius and 105-95 cm internal development, requiring 7 parts. Each drawing includes dimensions for the elbow's radius, thickness, and offsets.

C.C.
05

X 2

CASSERO CURVE 6
compensato spess. 20 mm
R int. 130 cm
sviluppi int. 43+145 cm
pezzi occorrenti n. 2

The drawing shows a curved compensator plate with a radius of R 130 cm. The total length of the two pieces is 180 cm (43 cm + 145 cm). Dimensions include a thickness of 20 mm, a top flange width of 0.54 cm, a bottom flange width of 0.07 cm, a central slot width of 0.47 cm, and a slot depth of 0.42 cm. The overall height is 1.37 cm, and the base width is 1.80 cm. A small detail shows the connection between the two pieces.

Muro su pavimento esistente

Muro su fondazione

Particolare esecutivo PFG

Particolare esecutivo PFG

Detailed technical drawings showing the installation of the compensator plate on existing pavement and foundation. The drawings include cross-sections and elevations, showing the relationship between the compensator plate, the wall, and the ground/foundation. Key dimensions and labels are provided for each part.

ARMATURE MURI E FONDAZIONI

PARTICOLARI ESECUTIVI

1:10